

PROBE DRIVING UNIT

# MAJ-935

Introducing a versatile, compact driving unit for probe ultrasonography that's helping define the new era of excellence in EUS



*Optimized For Use With Olympus's Versatile Line Of Conventional Probes,  
This Compact Probe Driving Unit Offers New Dual-Plane  
Reconstruction Scanning Capability*

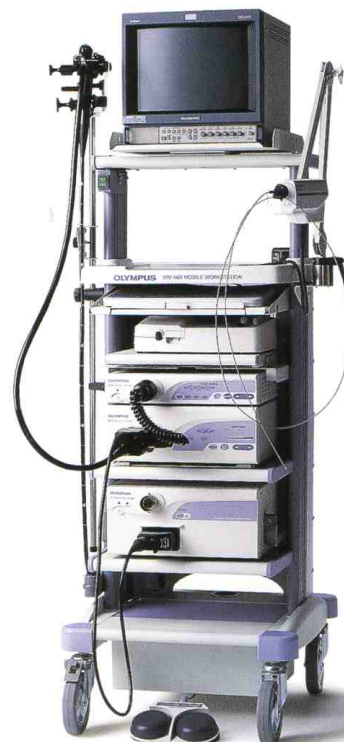


PROBE DRIVING UNIT

## MAJ-935

**Designed to accommodate a variety of Olympus ultrasonic probes, the MAJ-935 adds a new dimension to probe ultrasonography.**

The MAJ-935 Probe Driving Unit makes it possible for you to perform EUS procedures without a dedicated ultrasonic endoscope. Simply connect the MAJ-935 to the EU-M60 Endoscopic Ultrasound Center and insert an Olympus ultrasonic probe into the channel of the standard endoscope. The high frequencies available with ultrasonic probes enable observation of subtle textures in early-stage lesions, while their narrow diameters make it possible to perform intraductal ultrasonography. And, if you connect UM-DP12-25R/UM-DP20-25R you'll also be able to take advantage of dual-plane reconstruction (DPR) scanning with simultaneous display of radial and linear images.



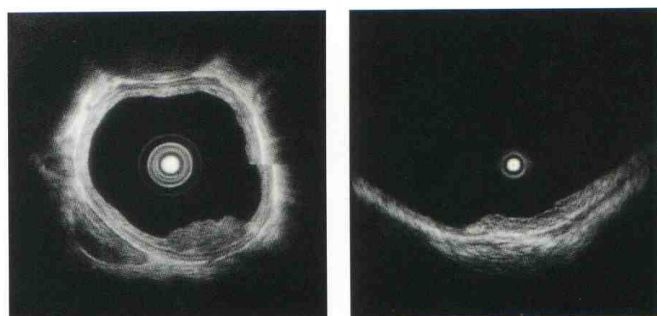
Olympus's wide selection of ultrasonic probes makes it easy to choose the one that's right for your needs.

- The MAJ-935 has been designed to work with Olympus's wide selection of ultrasonic probes. Available in a variety of frequencies, outer diameters and tip designs, any one of these can be combined with the MAJ-935 and your endoscope to match the specific requirements of any given procedure.



Outstanding imaging capability lets you do more with EUS.

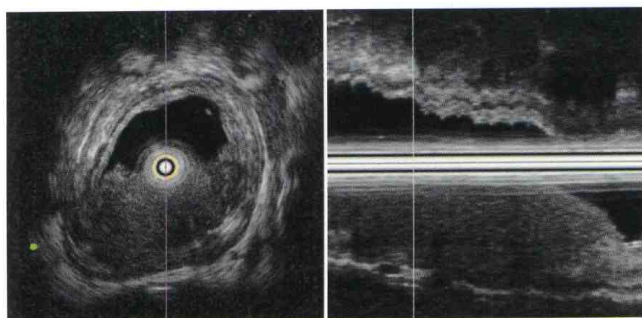
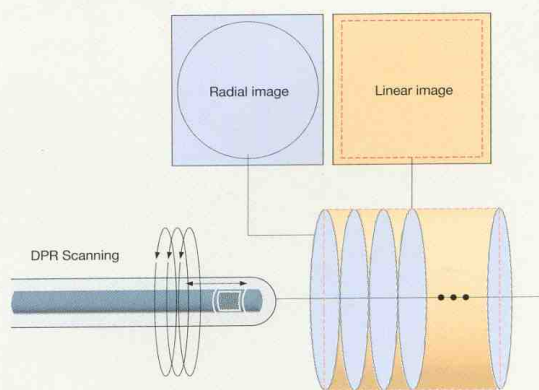
- The narrow diameters of probes make it possible to assess lesions where ultrasonic endoscopes cannot advance, such as in strictures, and also to perform intraductal ultrasonography.
- Ultrasonic probes also enable detailed observation at high frequencies, providing higher resolution of superficial layers.
- Balloon type probes are effective for use in areas where water cannot be pooled easily, such as in the esophagus.



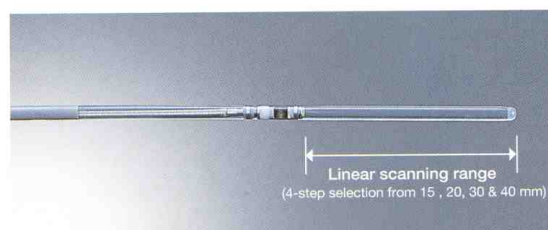
By combining radial and helical images, DPR scanning enables detailed imaging of lesion extensions.

- When a UM-DP12-25R/UM-DP20-25R is used with the MAJ-935, you can use dual-plane reconstruction (DPR) scanning to display radial and helical images simultaneously after a single stroke of the spiral scan.
- DPR makes ultrasonic images easier to understand, since it generates two dimensions that correlate directly with one another.

Schematic Diagram of DPR Scanning



DPR displays



## MAJ-935 Specifications

Size	Dimensions (Main Unit)	193mm(W)×70mm(D)×102mm(H)
	Total Length	1850mm
	Weight	1.4kg

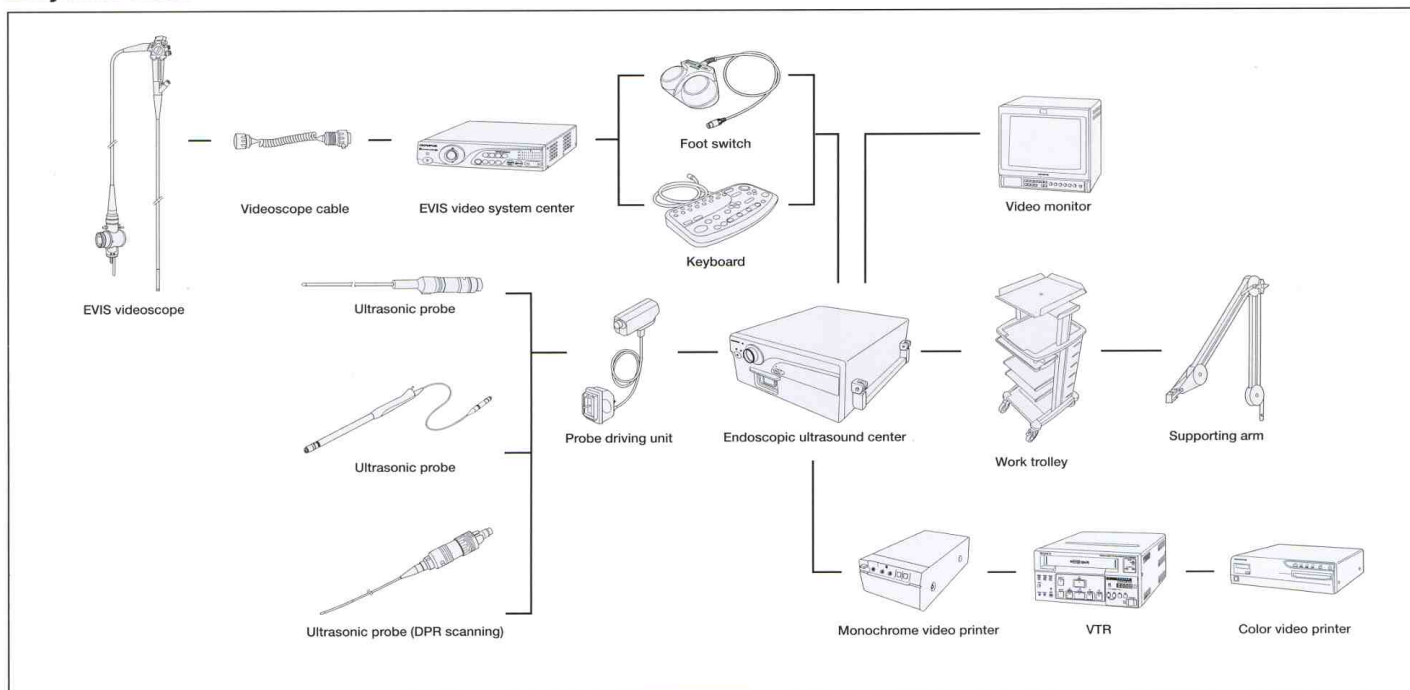
## Specifications of Probes

Model	Frequency	Scanning Method	Working Length	Total Length	Insertion Tube Outer Diameter
UM-2R	12MHz	Mechanical radial scanning	2050mm	2140mm	2.4mm
UM-3R	20MHz				2.4mm
UM-S20-20R	20MHz				1.7mm(distal end side), 2.0mm(proximal side)
UM-S30-25R	30MHz				2.4mm
UM-S30-20R	30MHz				1.7mm(distal end side), 2.0mm(proximal side)
UM-BS20-26R	20MHz				2.6mm(incl. balloon sheath MAJ-643R)
UM-G20-29R	20MHz				2.0mm(distal end side), 2.2mm(proximal side)

Model	Frequency	Scanning Method	Linear Scanning Range	Working Length	Total Length	Insertion Tube Outer Diameter
UM-DP12-25R	12MHz	Mechanical radial/helical scanning	40mm	2050mm	2210mm	2.5mm
UM-DP20-25R	20MHz					

Model	Frequency	Scanning Method	Length Insertion Section	Insertion Section Maximum Outer Diameter
RU-75M-R1	7.5MHz	Mechanical radial scanning	150mm	12mm
RU-12M-R1	12MHz			

## System Chart



Specification, design and accessories are subject to change without any notice or obligation on the part of the manufacturer.

# OLYMPUS®

**OLYMPUS OPTICAL CO., LTD.**  
2951 Ishikawa-cho, Hachioji-shi, Tokyo 192-8507, Japan  
**OLYMPUS OPTICAL CO. (EUROPA) GMBH.**  
Postfach 10 49 08, 20034 Hamburg / Wendenstrasse 14-18, 20097 Hamburg, Germany  
**OLYMPUS AMERICA INC.**  
2 Corporate Center Drive, Melville, N.Y. 11747-3157, U.S.A.  
**OLYMPUS LATIN AMERICA, INC.**  
6100 Blue Lagoon Drive, Suite 390 Miami, Florida 33126-2087, U.S.A.  
**OLYMPUS KEYMED**  
Keymed House, Stock Road, Southend-on-Sea, Essex SS2 5QH, England  
**OLYMPUS SINGAPORE PTE LTD.**  
491B River Valley Road #12-01/04, Valley Point Office Tower, Singapore 248373  
**OLYMPUS HONG KONG AND CHINA LIMITED.**  
Room 1520-1527, Ocean Centre, 5 Canton Road, Tsimshatsui, Kowloon, Hong Kong  
**OLYMPUS BEIJING REPRESENTATIVE OFFICE**  
Rm.818, South Tower, Beijing Kerry Centre, No.1 Guanghua Road, Chaoyang District, Beijing, 100020, China  
**OLYMPUS MOSCOW LIMITED LIABILITY COMPANY**  
117071, Moscow, Malaya Kaluzhskaya 19, bld. 1, fl.2, Russia  
**OLYMPUS AUSTRALIA PTY. LTD.**  
1/104 Ferntree Gully Road, Oakleigh, VIC 3166, Australia

OLYMPUS BUSINESS AREAS

IMAGING MEDICAL  
INDUSTRIAL

www.olympus.com