

**OLYMPUS**<sup>®</sup>



EVIS EXERA GASTROINTESTINAL VIDEOSCOPE  
**OLYMPUS GIF TYPE XTQ160**

# EXTRA-LARGE CHANNEL DESIGN

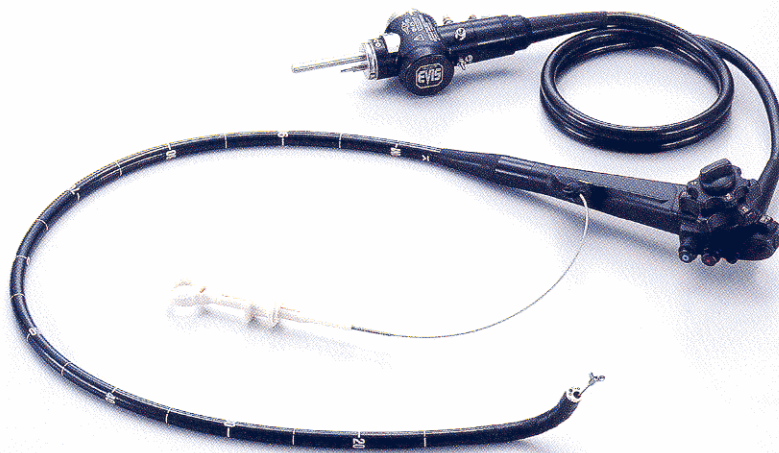
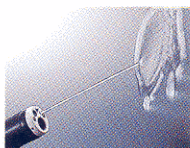
Extra-large 6.0 mm diameter channel offers the enhanced suction capability you need to manage emergency situations during procedures in the upper digestive tract.






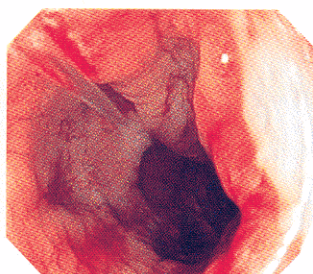
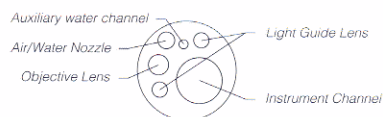
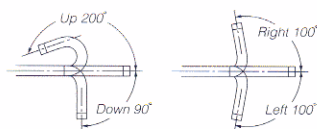
## Main Features for Powerful Performance

- Extra-large channel measuring 6.0 mm across offers unprecedented suction and biopsy capability. Connecting a T-plug to the channel port enhances suction power even more, while the dedicated biopsy forceps ensures adequate samples sizes.
- Large display size delivers superior image quality with sharper, crisper image and true-to-life color from edge to edge.
- 4-way angulation (200° up, 90° down and 100° right/left) enables comprehensive examination of the upper digestive tract.
- When used in combination with our dedicated flushing pump and CV-160 video system center, a continuously clear view is maintained by an auxiliary water function that removes mucus and clots inside the upper digestive tract at the touch of a scope switch.
- Ergonomically designed grip enhances scope maneuverability while redesigned easy-to-access knobs and user-selectable switches improve operability.
- Fully compatible with the CV-160/140.
- Scope ID function stores individual scope information and displays it on the monitor to facilitate endoscopy suite management.



### Specifications

Optical System	Field of view	140°
	Direction of view	0° Forward viewing
	Depth of field	3 to 100 mm
Distal End	Outer diameter	12.9mm
	Insertion Tube	Outer diameter
Bending Section	Angulation range	Up 200°, Down 90°, Right 100°, Left 100°
Working Length		1030 mm
Total Length		1360 mm
Instrument Channel	Inner diameter	6 mm
	Minimum visible distance	5 mm from the distal end
	Endo-Therapy accessory entrance/exit position in field of view 	



Specification, design and accessories are subject to change without any notice or obligation on the part of the manufacturer.

**OLYMPUS**

OLYMPUS OPTICAL CO., LTD.  
2951 Ishikawa-cho, Hachioji-shi, Tokyo 192-8507, Japan  
OLYMPUS OPTICAL CO. (EUROPA) GMBH.  
Postfach 10 49 08, 20034 Hamburg / Wendenstrasse 14-18, 20097 Hamburg, Germany  
OLYMPUS AMERICA INC.  
2 Corporate Center Drive, Melville, N.Y. 11747-3157, U.S.A.  
OLYMPUS LATIN AMERICA, INC.  
6100 Blue Lagoon Drive, Suite 390 Miami, Florida 33126-2087, U.S.A  
OLYMPUS KEYMED  
Keymed House, Stock Road, Southend-on-Sea, Essex SS2 5QH, England

OLYMPUS SINGAPORE PTE LTD.  
491B River Valley Road #12-01/04, Valley Point Office Tower, Singapore 248373  
OLYMPUS HONG KONG AND CHINA LIMITED,  
Room 1520-1527, Ocean Centre, 5 Canton Road, Tsimshatsui, Kowloon, Hong Kong  
OLYMPUS BEIJING REPRESENTATIVE OFFICE  
Room 1401, East Tower, Gong Yuan No6 Royal Palace, No6 Gong YuanXin, JianGuoMenNei, DongCheng District, Beijing, 100005, China  
OLYMPUS MOSCOW LIMITED LIABILITY COMPANY  
117071, Moscow, Malaya Kaluzhskaya 19, bld. 1, fl.2, Russia  
OLYMPUS AUSTRALIA PTY. LTD.  
31 Gilby Road, Mount Waverley, VIC., 3149, Australia

www.olympus.com

Printed in Japan F962SB-0303