

OLYMPUS[®]

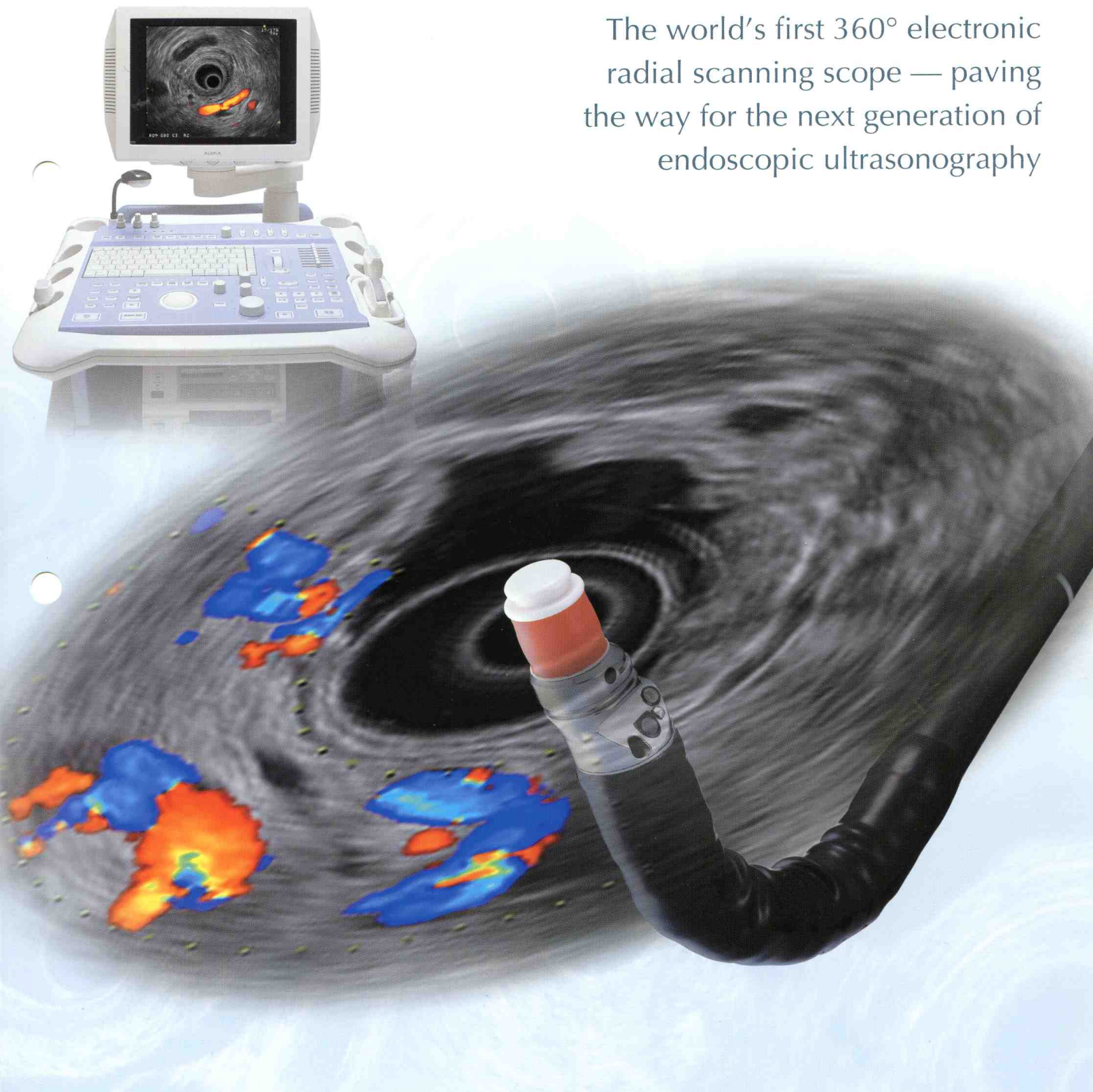
Your Vision, Our Future

EUS
ENDOSCOPIC ULTRASOUND SYSTEM

ULTRASONIC GASTROVIDEOSCOPE

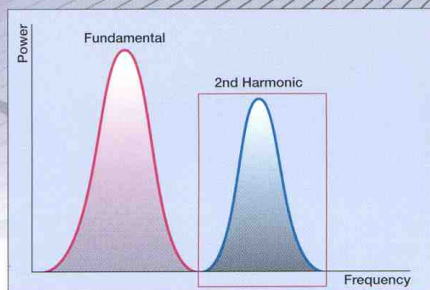
OLYMPUS **GF** TYPE **UE160**-AL5

The world's first 360° electronic
radial scanning scope — paving
the way for the next generation of
endoscopic ultrasonography

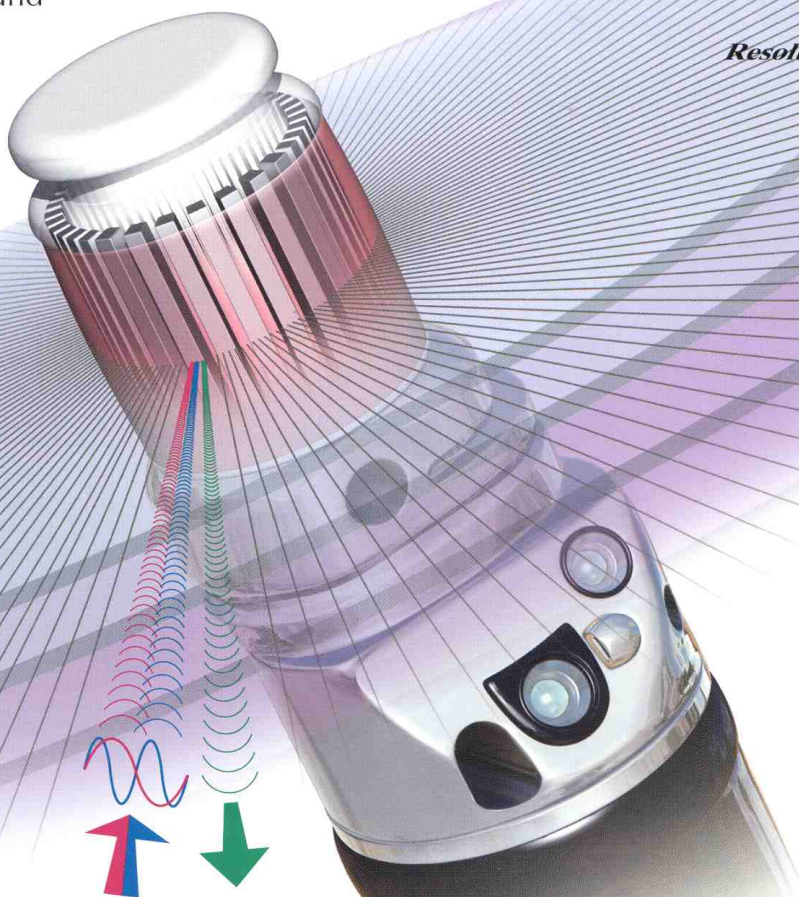


Superb Ultrasound Image Quality And Exceptional Scope Maneuverability

Expanding the potential of EUS, this breakthrough system combines exceptional scope capability and maneuverability with superb ultrasound image quality and advanced ultrasound functionality, enabling confirmation of blood flow conditions for easier orientation in the pancreatobiliary region and providing improved ultrasound image quality for enhanced diagnostic capability



Tissue Harmonic Echo (THE) is a technique that detects only the 2nd harmonic for improved imaging, enabling you to view a noise-free image with improved spatial and contrast resolution.



10MHz
Resolution

Each transducer element transmits and receives ultrasound waves
Superior resolution is achieved at this frequency.



ULTRASONIC GASTROVIDEOSCOPE

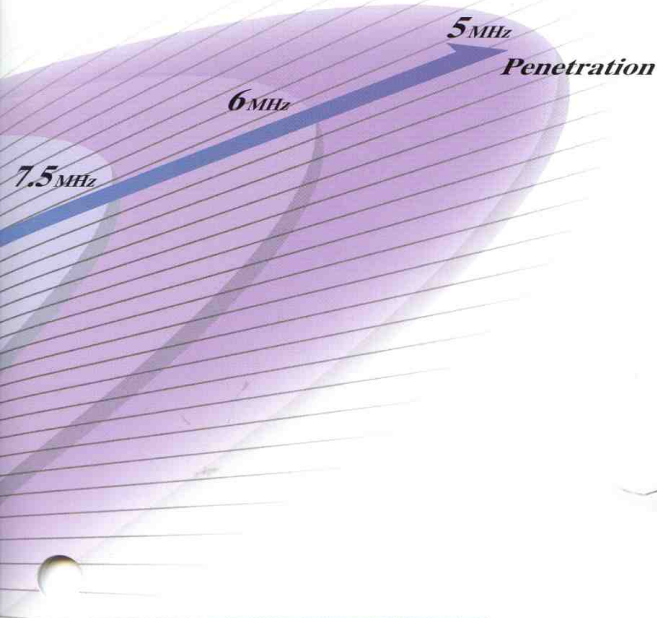
OLYMPUS GF TYPE UE160-AL5

Unprecedented scope maneuverability and high-quality imaging capability with a convenient lens cleaning function

Features/Benefits

- Easier orientation in the pancreatobiliary region with 360° electronic radial scanning and image rotation capability
- High-quality ultrasound images with 4 selectable frequencies
- Superb scope maneuverability, made possible by a wide angulation range (130° up, 90° down/right/left), to facilitate the approach to the duodenal bulb
- Tissue Harmonic Echo (THE) for improved spatial and contrast resolution
- Color and Power Doppler for effective confirmation of blood flow
- Lens cleaning function to keep the endoscopic field of view clear at all times

4-step frequency selection for near-field and far-field observation
This frequency range is excellent for penetrating deep tissue.



Sample Imaging Results

Early gastric carcinoma (type IIc)



6MHz

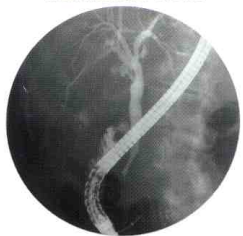


7.5MHz



10MHz

Chronic cholecystitis with Gall bladder stone



5MHz Fundamental image



THE 5.0R mode image



Color Doppler image

Aloka Diagnostic Ultrasound Systems

ProSound α 5/SSD-5000/SSD-5500

Delivering premium imaging performance, superior functionality and proven reliability

Aloka's ProSound technology is widely recognized for its ability to provide optimum ultrasound imaging performance, making it ideal for EUS. When combined with Olympus's GF-UE160-AL5 endoscope, the result is a EUS platform that delivers accurate, comprehensive imaging. Using a variety of state-of-the-art technologies such as THE, Aloka's ProSound system offers unparalleled views of internal structures.

Features

- Preeminent Imaging Performance
- Tissue Harmonic Echo (THE)
- Quad-Frequency Imaging (4-Step Multi-Frequency Imaging)
- Dual Dynamic Display (DDD)
- Storage & Networking
- DICOM Network

