

**OLYMPUS**<sup>®</sup>

Your Vision, Our Future

OLYMPUS  
**EndoTherapy**  
BEYOND THE SCOPE

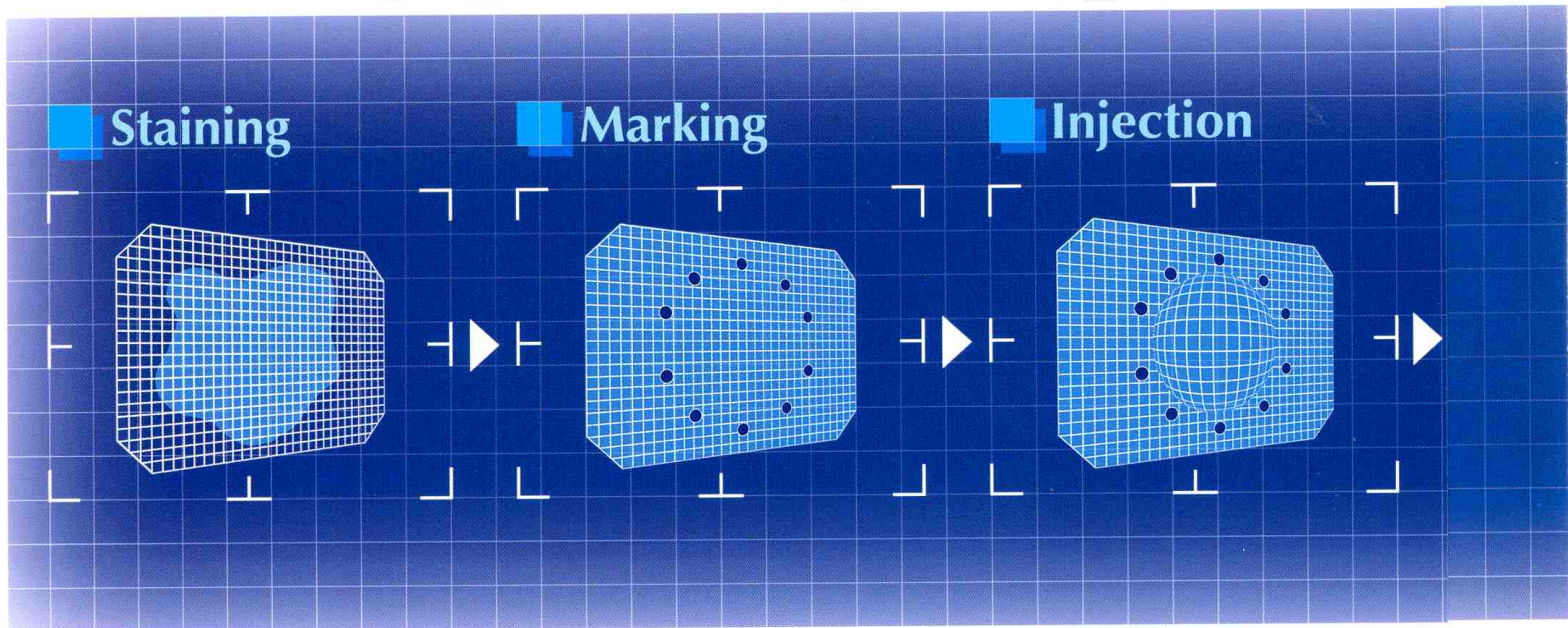
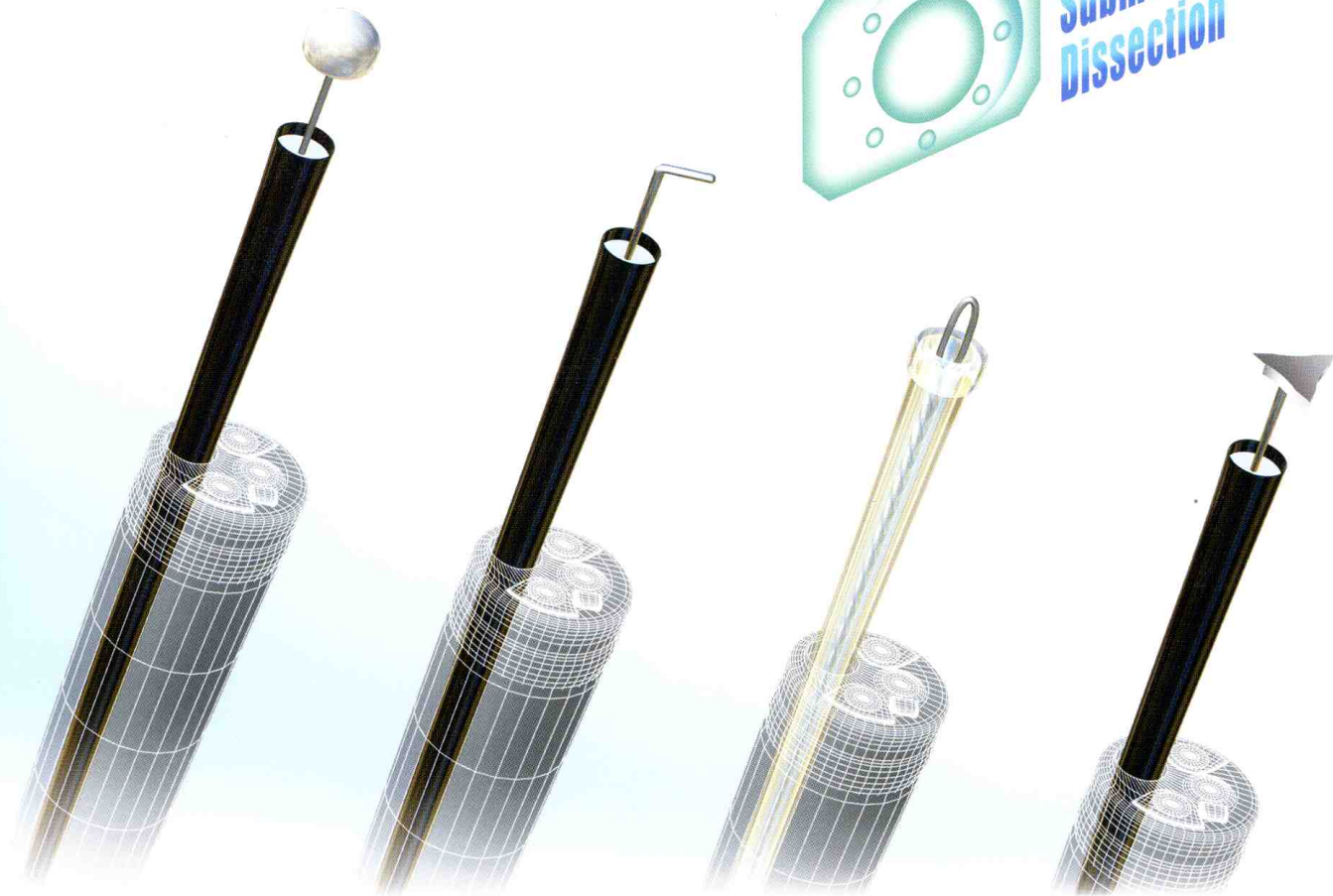
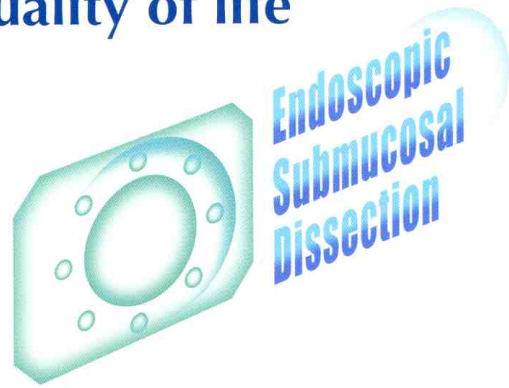


**Endoscopic  
Submucosal  
Dissection**

**ESD - Expanding The Possibilities**



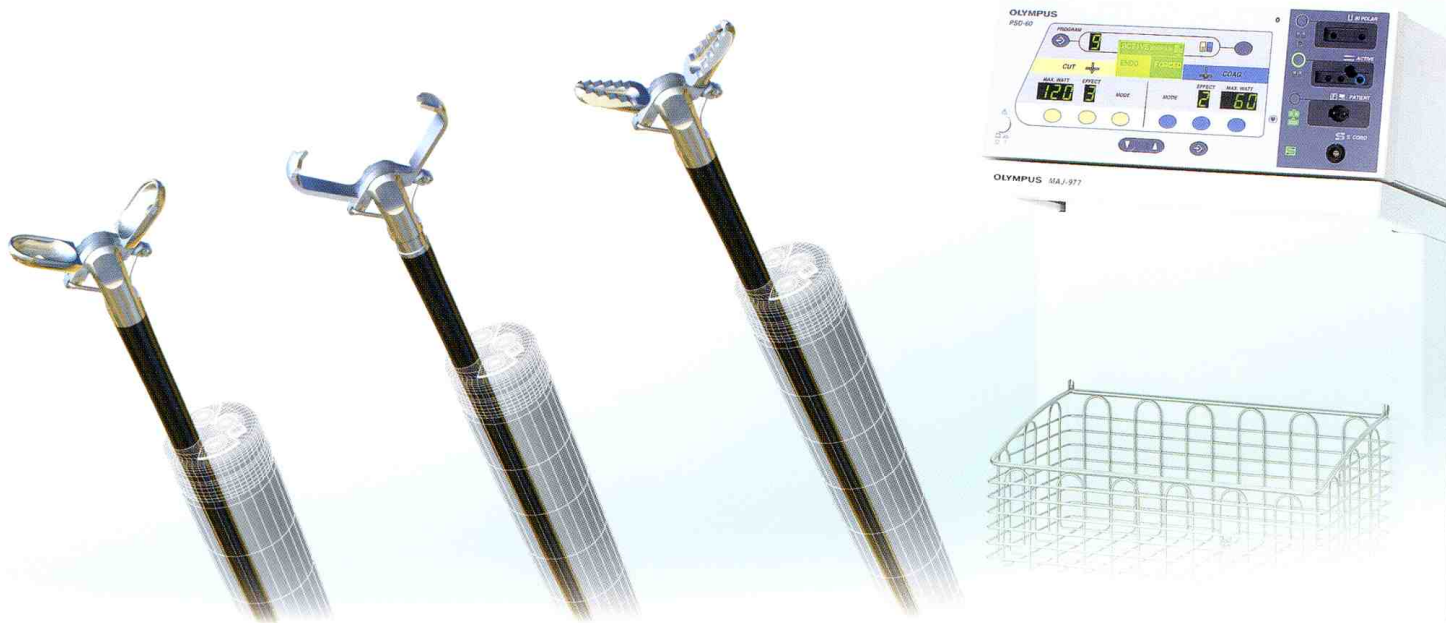
Our full line of ESD knives and supporting devices enables endoscopic en-bloc resection of larger lesions, improving patient quality of life





Already established as an effective and minimally invasive treatment for lesions in the gastrointestinal tract, endoscopic mucosal resection is now advancing to the next level. Known as ESD, or endoscopic submucosal dissection, this new technique makes possible en-bloc resection of larger lesions.

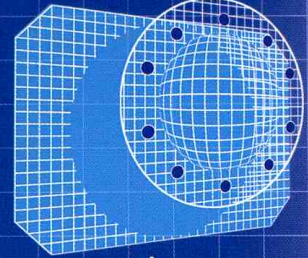
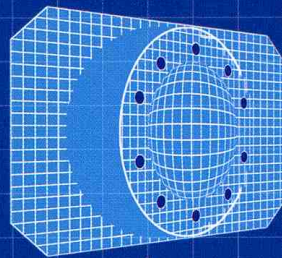
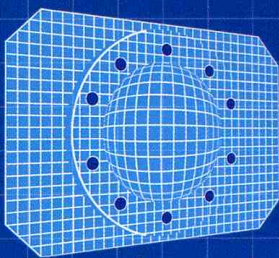
ESD's minimal invasiveness makes it an ideal substitute for open surgery, helping to improve patient quality of life by reducing recovery times and shortening hospital stays. Now you can explore the potential of this promising new technique with Olympus's versatile lineup of innovative knives and supporting devices specifically designed for ESD.



**Incision**

**Dissection**

**Resection**



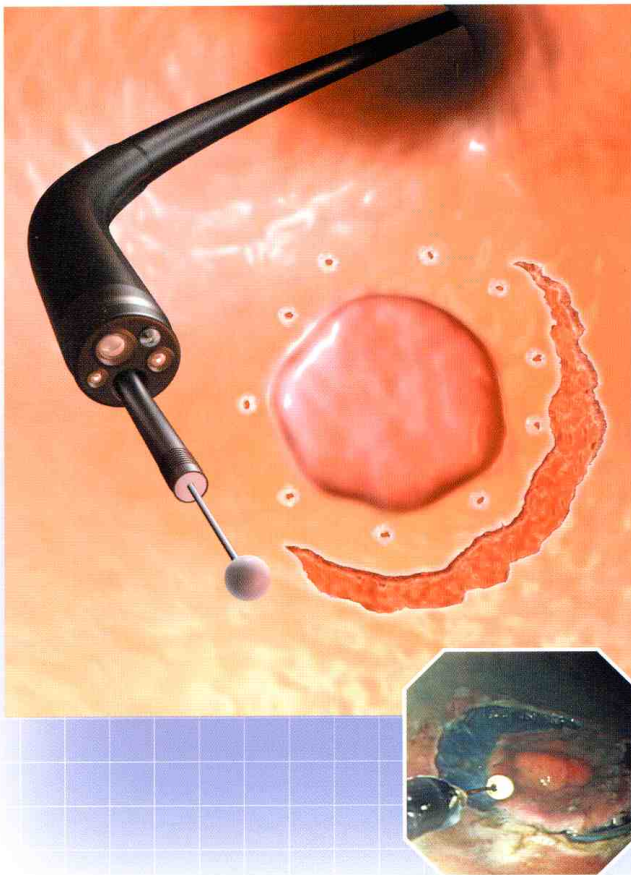


## Single-Use Electrosurgical Knife



### Insulated tip at the distal end enables incision and dissection with minimal invasion in deeper areas

Our IT Knife features an insulated tip that allows you to cut the mucosa while preventing unwanted cutting of tissues in deeper areas. By minimizing the risk of perforation, this unique design ensures that you will be able to perform incisions and dissections quickly and efficiently. Another design enhancement is a coiled sheath that provides just the right amount of rigidity to maintain maximum maneuverability when cutting the mucosa.

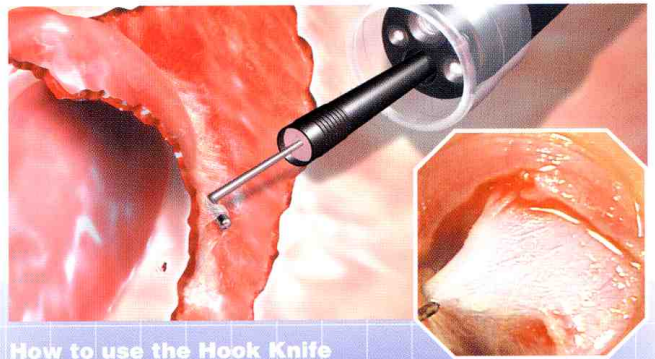


## Single-Use Electrosurgical Knife



### Rotation function and distal L-shaped hook for incision and dissection in longitudinal and lateral directions

An L-shaped hook at the distal end of the Hook Knife lets you hook the knife on the mucosa while cutting to minimize invasion in the depth direction. You can point the tip of the hook in the direction you want by turning the handle. To minimize invasion even further while keeping the view field open, an optional distal attachment available.



#### How to use the Hook Knife

1



Push in the slider to maximally extrude the knife tip.

2



Pull the slider gently to draw the knife tip back slightly.

3



While holding the sheath, turn the handle slowly. Then extrude the knife tip and lock it.

4



Then extrude the knife tip and lock it.



# From an array of ESD knives

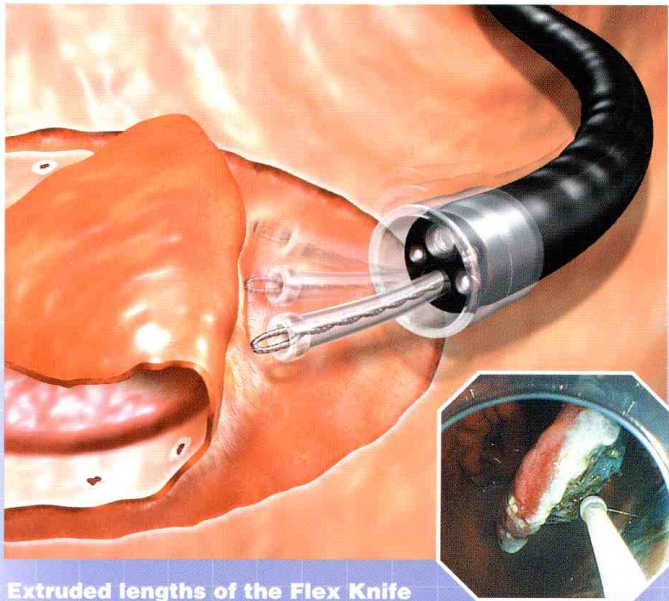
Single-Use Electrosurgical Knife

## Flexknife

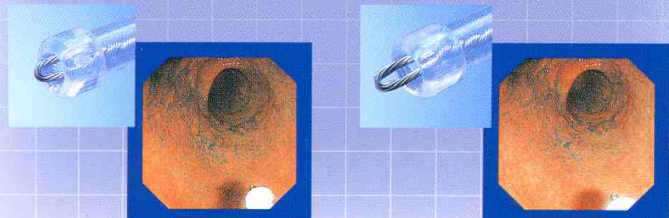
KD-630L

**Remarkably pliable design enables smooth incision and dissection in all directions**

The Flex Knife's unique combination of a slim sheath and stranded wire makes it pliable enough to enable incision and dissection in all directions. Thanks to a loop design at the tip of the knife that ensures a larger contact surface with the mucosa, proper cutting speed can easily be achieved. At the same time, a fold at the distal end of the sheath prevents the knife from penetrating the submucosa. The extruded length of the knife tip can be adjusted to different lengths suitable for marking, incision, or dissection.



Extruded lengths of the Flex Knife



Placement of marks around lesion

- Circumferential incision of mucosa around lesion
- Dissection of submucosal layer

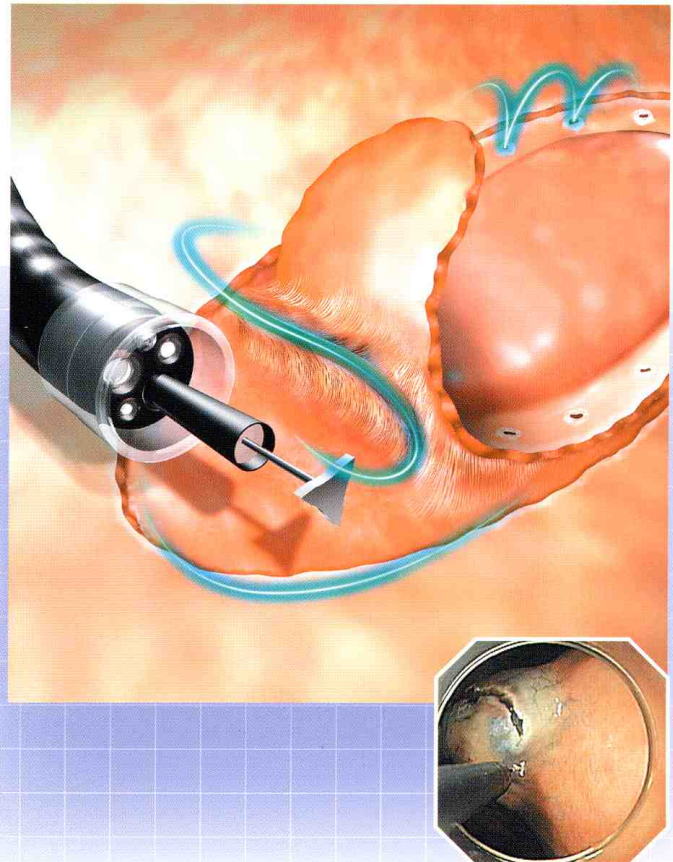
Single-Use Electrosurgical Knife

## Triangle Tip Knife

KD-640L

**Triangle tip at the distal end for all procedures from marking to incision and dissection**

The Triangle Tip Knife has a triangle conductive tip at the distal end that generates electrical resistance to facilitate cutting of the mucosa by applying coagulation to the site. Thanks to the triangle tip design, there's no need to rotate the knife and cutting can easily be performed in the direction you want. This knife can be used at any step of the ESD procedure, from marking and precutting to incision and dissection. Its tip can even be used to stop moderate bleeding. An optional distal attachment is available to ensure the view field is kept clear.





# Innovative devices to support ESD

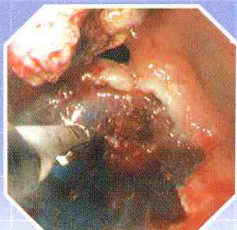
Single-Use  
Electrosurgical Hemostatic Forceps

**Coagrasper**

FD-410LR

## Unique forceps construction provides more reliable hemostasis

The first hemostatic forceps to feature a rotation function, the Coagrasper's forcep cups boast a unique anti-slip construction that allows you grasp bleeding points securely for faster and more reliable hemostasis. Notable features include a tapered tip to ensure easier approach and grasping, indentations in the middle of the grasping sections to direct current flow to the outer edges of the forcep cups, and cup clearance that is ideal for securely grasping a bleeding point.



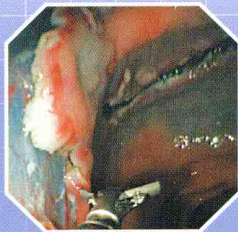
Single-Use  
Electrosurgical Incision Forceps

**HotClaw**

FD-420LR

## Claw-shaped tongs and rotation function for more efficient incision and dissection

The claws at the tip of the HotClaw forceps grasp the mucosal tissues more securely, while its tip can be rotated to enable you to approach or cut from any direction. Moreover, because the mucosal tissue is grasped and lifted before incision, invasion in deeper parts can be kept to a minimum.



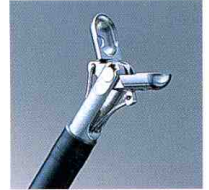
Single-Use  
Electrosurgical Incision Forceps

**HotBite**

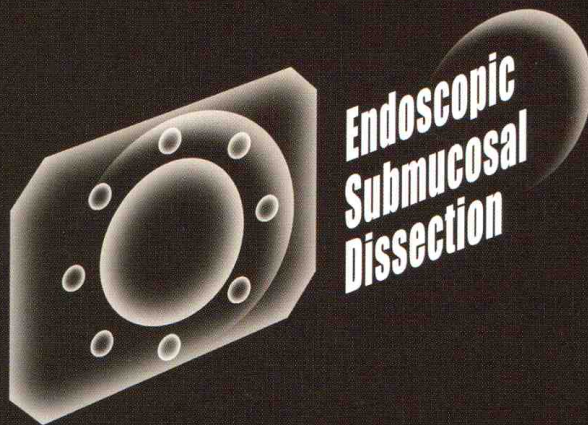
FD-430L

## Biopsy-style operation makes it easy to cut introduction holes for mucosal incision

With an operation style similar to biopsying, the HotBite not only makes it easy to create introduction holes that are exactly the right size for the tip of the IT Knife, but it's also safer to use than a needle knife. Featuring stepped cup, the HotBite boasts excellent cutting capability, even on flat mucosa.







Specifications, design and accessories are subject to change without any notice or obligation on the part of the manufacturer.

**OLYMPUS**<sup>®</sup>

**OLYMPUS MEDICAL SYSTEMS CORP.**  
Shinjuku Monolith, 3-1 Nishi-Shinjuku 2-chome, Shinjuku-ku, Tokyo 163-0914, Japan  
**OLYMPUS MEDICAL SYSTEMS EUROPA GMBH**  
Postfach 10 49 08, 20034 Hamburg / Wendenstrasse 14-18, 20097 Hamburg, Germany  
**OLYMPUS AMERICA INC.**  
3500 Corporate Parkway, P.O. Box 610, Center Valley, PA 18034-0610, U.S.A.  
**OLYMPUS LATIN AMERICA, INC.**  
5301 Blue Lagoon Drive, Suite 290 Miami, Florida 33126-2097, U.S.A.  
**KEYMED LTD.**  
Keymed House, Stock Road, Southend-on-Sea, Essex SS2 5QH, England

**OLYMPUS SINGAPORE PTE LTD.**  
491B River Valley Road #12-01/04 Valley Point Office Tower, Singapore 248373  
**OLYMPUS HONG KONG AND CHINA LIMITED**  
Room 1520-1527, Ocean Centre, 5 Canton Road, Tsimshatsui, Kowloon, Hong Kong  
**OLYMPUS (BEIJING) SALES & SERVICE CO., LTD.**  
Room 1202, NCI Tower, A12 Jianguomenwai Avenue Chaoyang District Beijing, 100022, China  
**OLYMPUS MOSCOW LIMITED LIABILITY COMPANY**  
117071, Moscow, Malaya Kaluzhskaya 19, bld. 1, fl.2, Russia  
**OLYMPUS AUSTRALIA PTY LTD**  
31 Gilby Road, Mount Waverley, VIC., 3149, Australia

[www.olympus.com](http://www.olympus.com)

Printed in Japan F1145SB-1007