

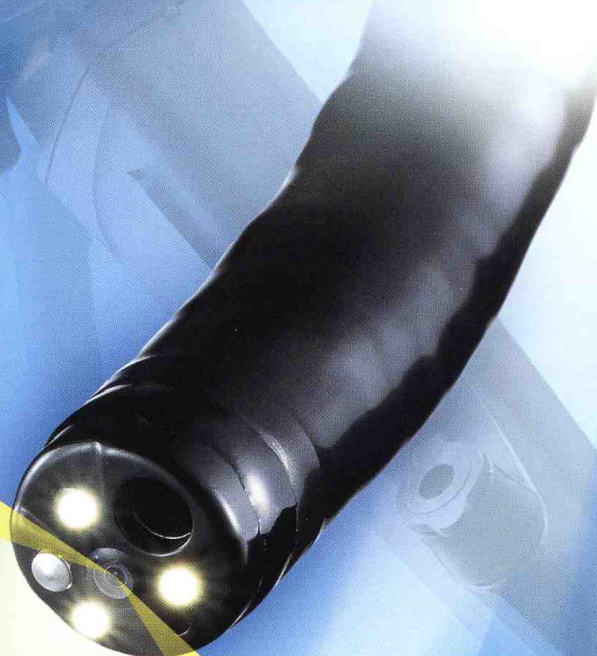
**OLYMPUS**<sup>®</sup>

Your Vision, Our Future

EVIS EXERA II COLONOVIDEOSCOPE

**OLYMPUS CF TYPE Q180AL/I**

EVIS  
**EXERA II**



*Unique wide-angle lens technology  
maximizes colonoscopy efficiency*

**innoflex**

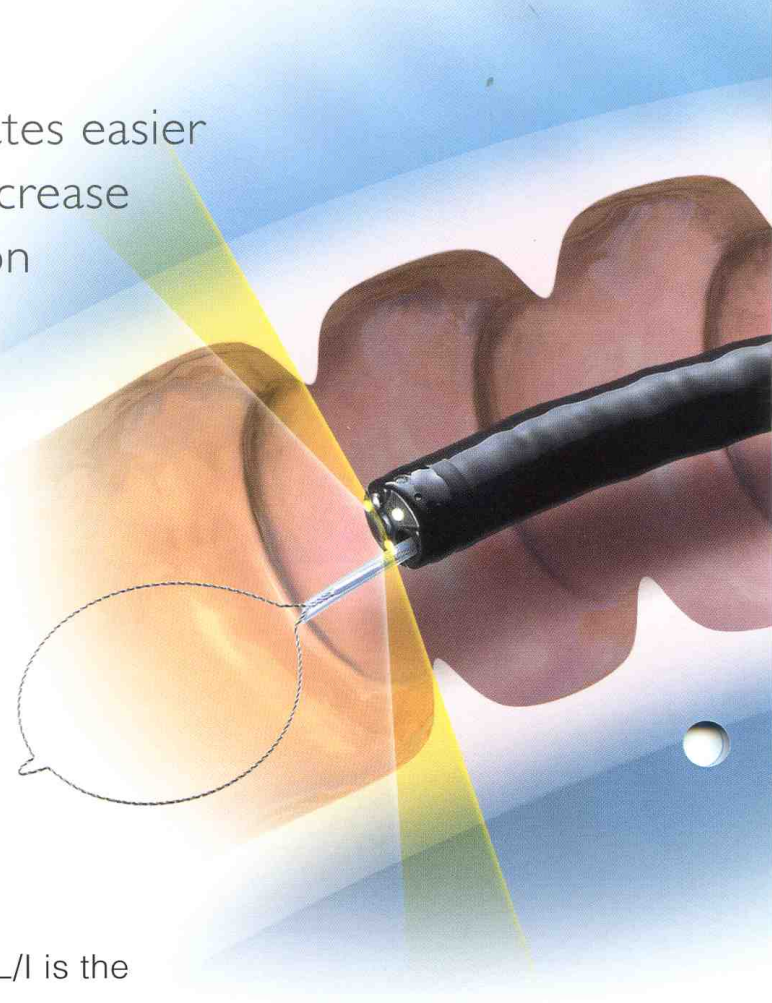


Olympus wide-angle imaging facilitates easier insertion into the colon and may increase diagnostic yield, shorten examination times and enhance efficiency

The CF-Q180AL/I offers the widest field of view ever available in a colonoscope.

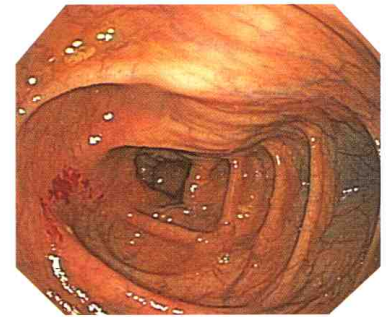
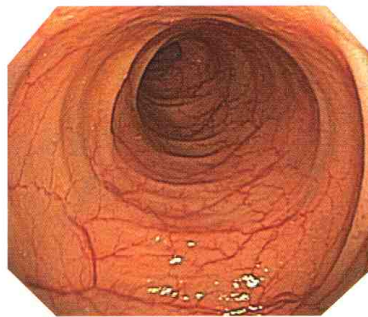
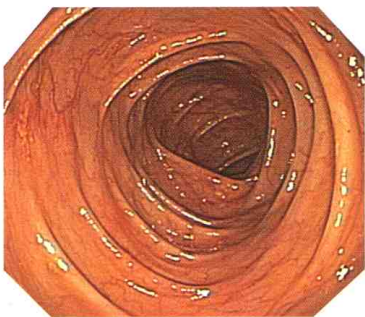
By increasing the field of view to 170°, the colonoscopist is able to view peripheral areas, making it possible to orient the scope in the colon more easily.

Supported by the Variable Stiffness innoflex function, superb image quality, improved brightness, and a 3.7 mm diameter channel to maximize therapeutic capability, the CF-Q180AL/I is the right choice for today's most demanding procedures.

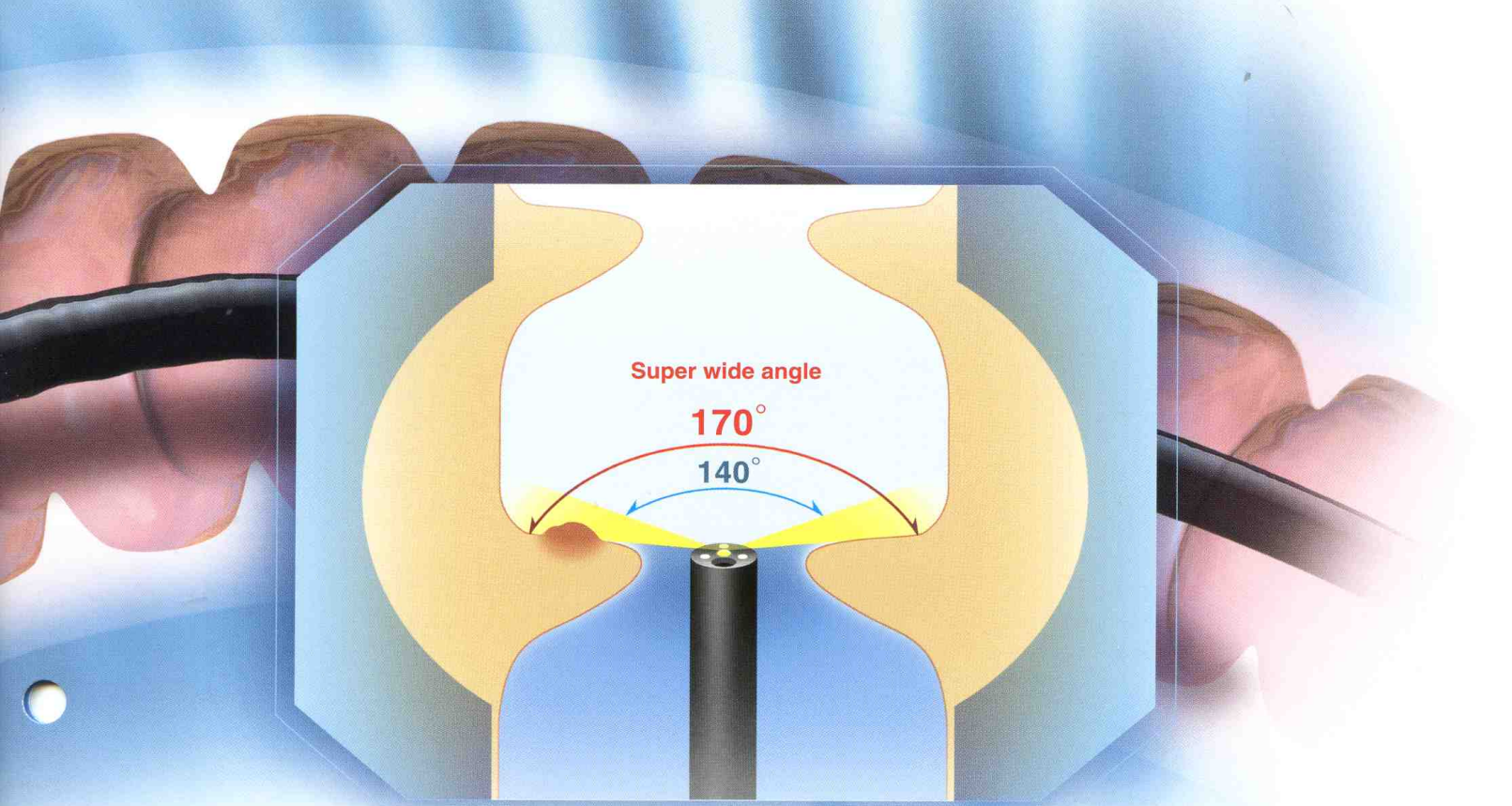


## ■ High-resolution, superb wide-angle images with large-size display

With the CF-Q180AL/I, superb images are sharp and clear from one edge to the other, faithfully reproducing the texture of the mucosa and the distribution of capillaries. The large display size may make images easier to view and small details more apparent. The combination of these larger, high-quality images with the expanded 170° field of view should enable you to maneuver the scope more smoothly in the colon and make it easier to detect lesions, even ones behind folds. As a result, you can expect shorter examination times and enhanced procedural efficiency.







■ Auxiliary water jet facilitates mucosal cleansing

The CF-Q180AL/I's independent forward auxiliary water jet makes it easy to keep a clear view at all times. When combined with the dedicated flushing pump, it allows you to remove mucus and debris inside the colon at the touch of a button on the scope or on the footswitch unit. Keeping the view continuously clear ensures effective observation and may increase the diagnostic yield.



■ Many treatment options with a 3.7 mm channel

With an instrument channel measuring 3.7 mm across, the CF-Q180AL/I can easily accommodate a wide range of endo therapy accessories offering you an expanded array of treatment options, and satisfactory suction capability.



■ Olympus-exclusive Variable Stiffness capability

This innovative feature enables you to adjust insertion tube's flexibility to the patient's anatomy simply by turning the ring located below the control section.

