

OLYMPUS[®]

Your Vision, Our Future



EVIS EXERA COLONOVIDEOSCOPE

OLYMPUS CF TYPE 2T160L/I

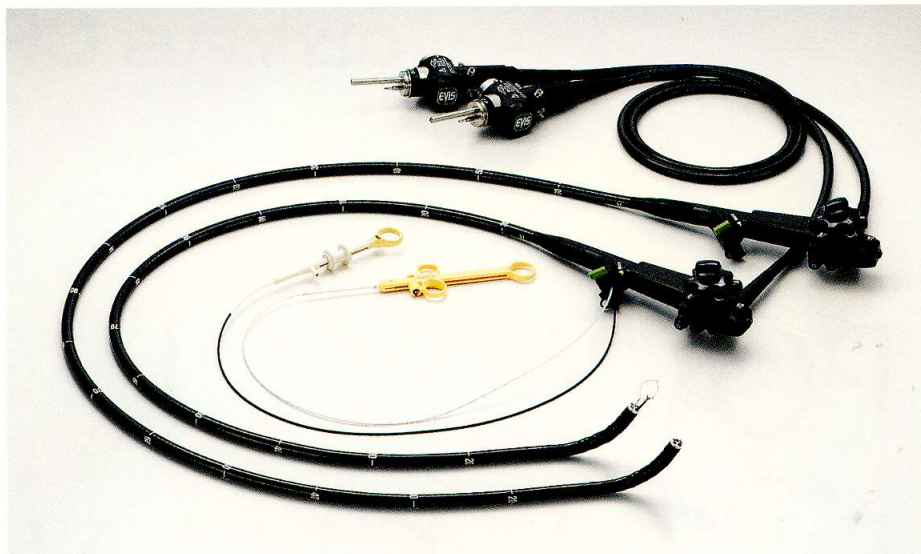
POWERFUL DUAL-CHANNEL PERFORMANCE

Featuring two independent channels with diameters of 3.7 mm and 3.2 mm, this scope offers the most powerful treatment and suction capability for colonoscopic procedures



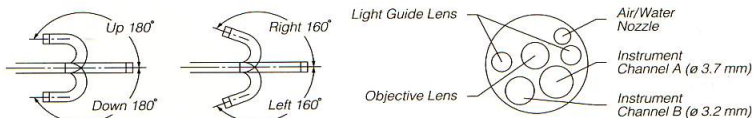
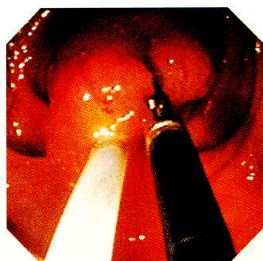
Main Features for Powerful Performance

- Dual channel design, with a 3.7 mm diameter channel for suction, and a 3.2 mm diameter channel for insertion of an Endo-Therapy accessory, ensures powerful suction capability and allows both channels to be used for Endo-Therapy accessories.
- 3 mm minimum depth of field for close-up observation.
- Extra-wide 140° field of view allows easier observation of a wider area of the site.
- 4-way angulation (180° up/down and 160° right/left) enables complete and comprehensive examination of the colon.
- 13.7 mm outer diameter insertion tube.
- Fully compatible with the CV-160/140/100.
- Scope ID function stores individual scope information and displays it on the monitor to facilitate endoscopy suite management.



Specifications

Optical System	Field of view	140°
	Direction of view	0° Forward viewing
	Depth of field	3 to 100 mm
Distal End	Outer diameter	13.8 mm
	Insertion Tube	Outer diameter
Bending Section	Angulation range	Up 180°, Down 180°, Right 160°, Left 160°
Working Length		L:1680 mm, I:1330 mm
Total Length		L:2005 mm, I:1655 mm
Instrument Channel	Inner diameter	A:3.7 mm, B:3.2 mm
	Minimum visible distance	5 mm from the distal end
	Endo-Therapy accessory entrance/exit position in field of view	



Specifications, design and accessories are subject to change without any notice or obligation on the part of the manufacturer.

OLYMPUS[®]

OLYMPUS MEDICAL SYSTEMS CORP.
Shinjuku Monolith, 3-1 Nishi-Shinjuku 2-chome, Shinjuku-ku, Tokyo 163-0914, Japan
OLYMPUS MEDICAL SYSTEMS EUROPA GMBH
Postfach 10 49 08, 20034 Hamburg / Wendenstrasse 14-18, 20097 Hamburg, Germany
OLYMPUS AMERICA INC.
3500 Corporate Parkway PO Box 610, Center Valley, PA 18034-0610, U.S.A.
OLYMPUS LATIN AMERICA, INC.
6100 Blue Lagoon Drive, Suite 390 Miami, Florida 33126-2087, U.S.A.
KEYMED LTD.
Keymed House, Stock Road, Southend-on-Sea, Essex SS2 5QH, England

OLYMPUS SINGAPORE PTE LTD.
491B River Valley Road #12-01/04, Valley Point Office Tower, Singapore 248373
OLYMPUS HONG KONG AND CHINA LIMITED
Room 1520-1527, Ocean Centre, 5 Canton Road, Tsimshatsui, Kowloon, Hong Kong
OLYMPUS (BEIJING) SALES & SERVICE CO., LTD.
Room.1202, NCI Tower, A12 Jianguomenwai Avenue Chaoyang District Beijing, 100022, China
OLYMPUS MOSCOW LIMITED LIABILITY COMPANY
117071, Moscow, Malaya Kaluzhskaya 19, bld. 1, fl.2, Russia
OLYMPUS AUSTRALIA PTY LTD
31 Gilby Road, Mount Waverley, VIC., 3149, Australia

www.olympus.com

Printed in Japan F864SB-3-1006