

**OLYMPUS**<sup>®</sup>

Your Vision, Our Future



Fiberoptic Bronchoscopy Redefined, Once Again

OES 60

BRONCHOFIBERSCOPES

# Fiberoptic bronchoscopy still has a lot to offer — that's why we're introducing the all-new OES-60 bronchofiberscope lineup



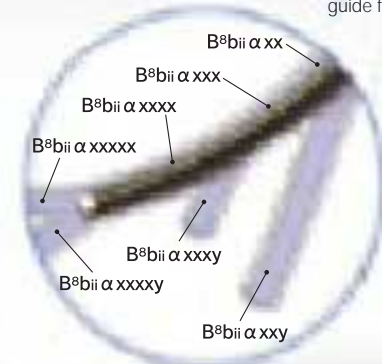
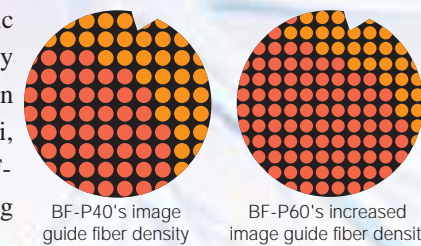
## A new direction in the evolution of bronchoscopy

At Olympus, we remain committed to developing fiberoptic bronchoscopes that achieve higher levels of diagnostic accuracy while maintaining the proven advantages of fiberoptics. With the incidence of respiratory diseases increasing worldwide, the importance of that commitment is more apparent now than ever. To meet the fast-growing demand for high-precision bronchoscopic examination and treatment instruments, we have developed a radically new line of advanced bronchoscopes that offer an improvement in insertability, are wider on the inside, and deliver higher image quality. Featuring four different scopes, the new BF-60 Series represents a dramatic leap forward in the evolution of bronchoscopic performance. Not only do these new scopes enable more effective observation, diagnosis, and treatment throughout the tracheobronchial tree from the central bronchi to the peripheral bronchi their compact, ergonomic designs minimize space requirements, making them ideal for emergency rooms or facilities with smaller case loads.

## Meeting the challenge

Fiberoptic bronchoscopy's continuing importance in the future makes it crucial that we continue to refine and improve this vital technology. Epitomizing Olympus's renowned fiberoptic and precision technology, our new OES-60 lineup has been specifically designed to strengthen the advantages inherent to fiberoptic bronchoscopes and enable them to respond even more effectively to the diagnostic requirements of respiratory diseases. For deeper insertion into the peripheral bronchi, there's the super-slim BF-XP60 with a reduced bending

radius. For biopsies, there's the new BF-MP60, which features a large instrument channel that can accommodate standard forceps. For superior image quality, there's the BF-P60, which incorporates many more image guide fibers than its predecessor to deliver images that are virtually free of dot patterns. And, for more demanding therapeutic requirements, there's the BF-1T60, which has an extra-wide instrument channel that can handle 2.8-mm diameter forceps and provides increased suction power.

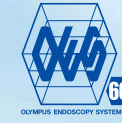


The super-slim BF-XP60's reduced bending radius makes insertion into the peripheral bronchi even easier.

In addition to laser treatment, the BF-P60 and BF-1T60 are compatible with high-frequency electro-surgical devices.

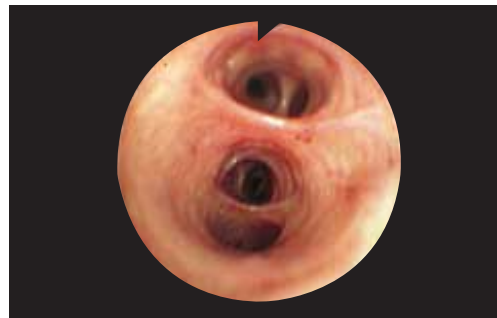
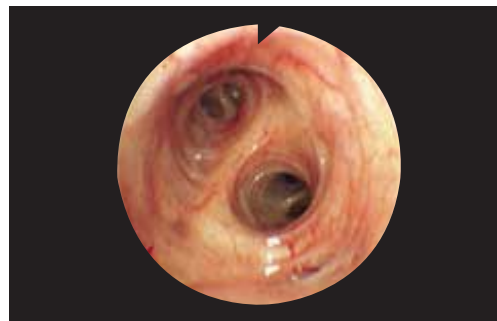






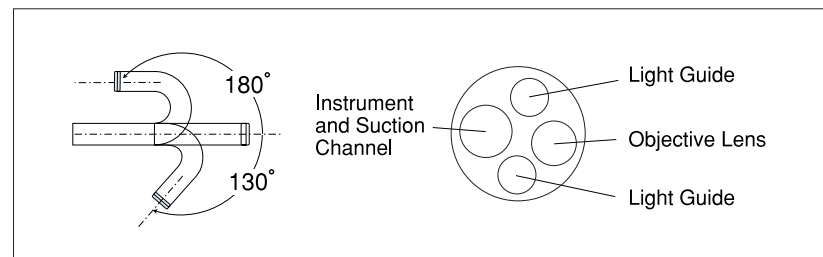
### With more image guide fibers, this routine scope offers enhanced image quality and excellent performance

To provide the level of image quality today's bronchial applications demand, the BF-P60's image guide incorporates more optical fibers than its predecessor, producing sharper, smoother pictures with less moiré. This enhanced image quality is supported by a wide 120... field of view that brings more of the target site into view, as well as 180... up/130... down angulation that makes it easier to maneuver the scope in the bronchi and access the target site. With a distal-end diameter of only 4.9 mm, a 2.2 mm wide inner channel, compatibility with high-frequency electrosurgical devices, and OES and EVIS video system connectivity, this scope is ideal for a wide range of routine applications.



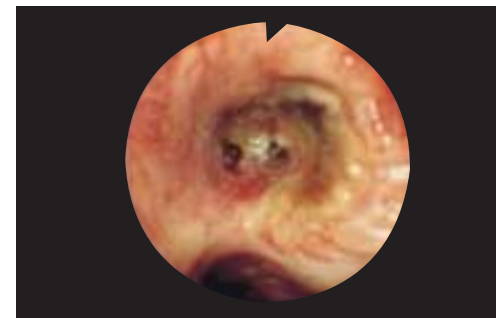
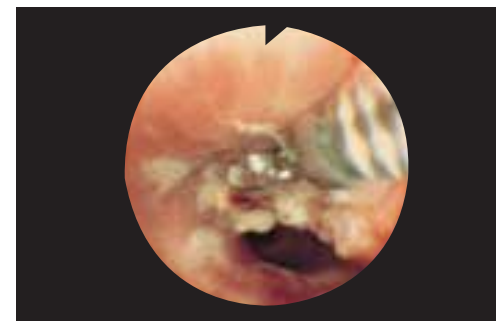
■ Specifications

Optical System	Field of view	120 °
	Direction of view	0 ° (Forward viewing)
	Depth of field	3 ~ 50mm
Insertion Tube	Distal end outer diameter	4.9mm
	Insertion tube outer diameter	5.0mm
	Working length	600mm
Instrument Channel	Channel inner diameter	2.2mm
	Minimum visible distance	5mm from distal end
Bending Section	Angulation range	Up180 °, Down130 °
Total Length		900mm



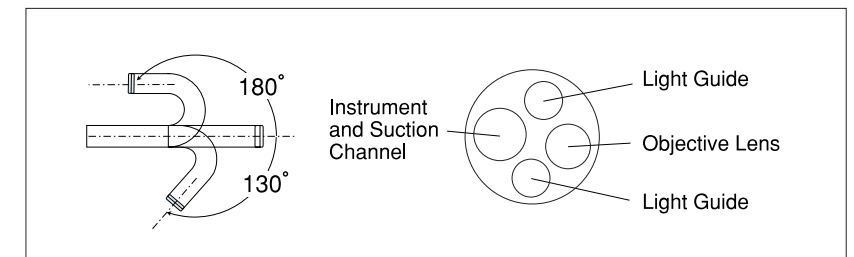
### Extra-wide channel accommodates 2.8 mm diameter forceps, greatly enhancing therapeutic capability

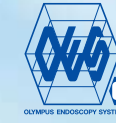
Equipped with an extra-wide instrument channel measuring a full 3.0 mm across, the BF-1T60 can easily accommodate 2.8 mm diameter forceps and offers increased suction power. The BF-1T60 achieves this without giving up the slim 5.9 mm distal end diameter of its predecessor. Add to that a wide 120... field of view, 180... up/130... down angulation, and a 600 mm working length, and the result is a scope that enables accurate observation of a wider area, is easier to maneuver in the tracheobronchial tree, and delivers exceptional therapeutic capability. Fully compatible with high-frequency electrosurgical devices, this scope can be connected to both OES and EVIS video systems.



■ Specifications

Optical System	Field of view	120 °
	Direction of view	0 ° (Forward viewing)
	Depth of field	3 ~ 50mm
Insertion Tube	Distal end outer diameter	5.9mm
	Insertion tube outer diameter	6.0mm
	Working length	600mm
Instrument Channel	Channel inner diameter	3.0mm
	Minimum visible distance	5mm from distal end
Bending Section	Angulation range	Up180 °, Down130 °
Total Length		900mm



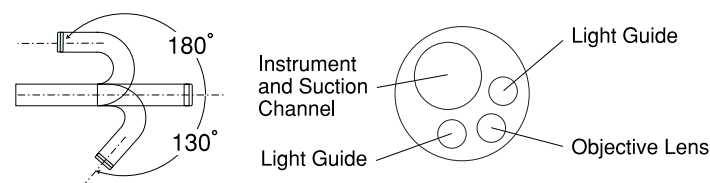


### Ingenious design incorporates a wide 2.0 mm channel with an outer diameter of only 4.0 mm at the distal end

Thanks to our precision design technology, we have succeeded in creating a scope that measures a mere 4.0 mm across at the distal end and 4.4 mm at the insertion tube. Incredibly, this scope also incorporates a large 2.0 mm instrument channel able to accommodate standard forceps for use in peripheral lung biopsies. Compatible with both OES and EVIS video systems and boasting a wide 120... field of view for clear observation of a wider area and 180... up / 130... down angulation for easier maneuvering in the bronchi, the versatile BF-MP60 is an excellent choice for tracheobronchial applications.

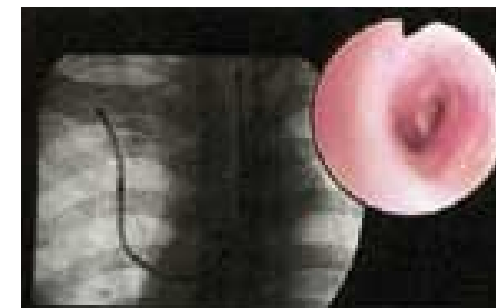
■ Specifications

Optical System	Field of view	120 °
	Direction of view	0 ° (Forward viewing)
	Depth of field	3 ~ 50mm
Insertion Tube	Distal end outer diameter	4.0mm
	Insertion tube outer diameter	4.4mm
	Working length	600mm
Instrument Channel	Channel inner diameter	2.0mm
	Minimum visible distance	3mm from distal end
Bending Section	Angulation range	Up180 °, Down130 °
Total Length		900mm



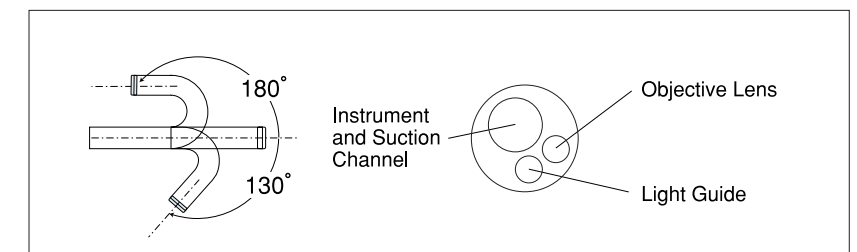
### Super-slim 2.8 mm diameter and reduced bending radius offer unprecedented insertion capability

With a reduced bending radius than its predecessors and an extra-slim design that is only 2.8 mm across at both the distal end and insertion tube, the BF-XP60 puts even the outermost peripheral bronchi within reach. Remarkably, despite its ultra-slim design, the BF-XP60 incorporates an instrument channel measuring 1.2 mm across. And, like its larger companion models, performance has been optimized with features like a wide 90... field of view, 180... up / 130... down angulation, and OES and EVIS video system connectivity.



■ Specifications

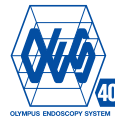
Optical System	Field of view	90 °
	Direction of view	0 ° (Forward viewing)
	Depth of field	2 ~ 50mm
Insertion Tube	Distal end outer diameter	2.8mm
	Insertion tube outer diameter	2.8mm
	Working length	600mm
Instrument Channel	Channel inner diameter	1.2mm
	Minimum visible distance	1.5mm from distal end
Bending Section	Angulation range	Up180 °, Down130 °
Total Length		910mm





OES Bronchofiberscope

# OLYMPUS BF TYPE 3C40



3.3 mm slim bronchoscope designed for better performance



Despite a super-slim design with a distal end that measures only 3.3 mm across, the BF-3C40 delivers outstanding optical performance thanks to the use of extra-fine optical fibers. So not only does the BF-3C40 expand the applicable range of children's bronchi and allow you to penetrate even farther into the bronchial tree, it lets you see more clearly as well. The BF-3C40's high-resolution images are bigger, sharper, and clearer with reduced dot patterns.

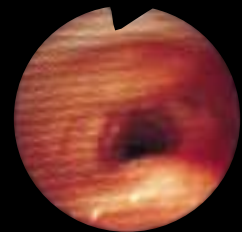
■ Specifications

Optical System	Field of view	120 °
	Depth of field	3 ~ 50mm
Insertion Tube	Distal end outer diameter	3.3mm
	Insertion tube outer diameter	3.6mm
	Working length	550mm
Instrument Channel	Channel inner diameter	1.2mm
	Minimum visible distance	3mm from distal end
Bending Section	Angulation range	Up180 °, Down130 °
Total Length		840mm

OES Bronchofiberscope

# OLYMPUS BF TYPE N20

Ultra-slim bronchoscope with a 2.2 mm insertion tube



Measuring a hair-thin 1.8 mm in diameter at the distal tip and 2.2 mm in diameter at the insertion tube, the BF-N20 is uniquely suited to diagnosis of respiratory tract diseases in neonates and infants. Despite the super-slim design, this scope provides remarkably bright, sharp images thanks to the use of Olympus's exclusive high-resolution image guide fibers. Distal end angulation of 160... up and 90... down further supports accurate diagnosis.

■ Specifications

Optical System	Field of view	75 °
	Depth of field	2 ~ 50mm
Insertion Tube	Distal end outer diameter	1.8mm
	Insertion tube outer diameter	2.2mm
	Working length	550mm
Bending Section	Angulation range	Up160 °, Down90 °
Total Length		840mm

# A versatile electrosurgical unit featuring multiple cutting and coagulation modes and reliable, safety-oriented design

Powerful cutting and cauterization capabilities complemented by outstanding safety features make the PSD-20 Electrosurgical Unit the ideal solution for the rigorous demands of bronchoscopic procedures.

The PSD-20.

Another cutting edge technology from Olympus.



# PSD-20

Ideal Output Characteristics Assure Superior Cutting and Coagulation Capabilities

Standby Mode and Monitor Timer Prevent Needless Cauterization

Two-pedal Foot Switch Unit Memory Mode to Keep Previous Settings

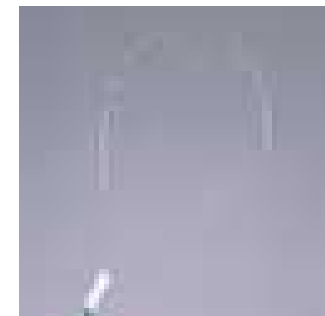
Comprehensive Self-Diagnostics Ensure Safe Operation

Four Blend Waveform Modes Reduced Current Leakage

## Full line of bronchoscopic electrosurgery accessories

### Electrosurgical Snare

For polypectomy and removal of tumors.



### Electrosurgical Probe

Enables local cauterization of tumor surface to achieve hemostasis.



### Hot Biopsy Forceps

For quick, accurate resection of tissue using cauterization.



### Electrosurgical Knife

Unique configuration for effective cauterization.



# Ancillary Equipment



**CV-160**  
EVIS EXERA Video System Center

**CLV-160**  
EVIS EXERA Xenon Light Source

CV-160 offers high image quality thanks to the incorporation of fine digital circuitry that enables it to achieve high resolution and sharp images. And also, powerful, compact light source, CLV-160 helps realizing clear and accurate observation.



**OTV-S7V**  
VISERA Video System Center

**CLV-S40**  
VISERA Xenon Light Source

Crisp, clear details and outstanding brightness and clarity provided by our high-performance video system will make your work much easier. Excellent system expandability and a powerful light source with a 300-watt long-life xenon lamp make this system the ideal complement to your scope.



**OEP-3** Color Video Printer

Combining excellent print quality with high-speed output, the OEP-3 is a compact medical-grade printer that uses dye-sublimation technology to produce high-resolution endoscopic images. A color adjustment function lets you adjust colors to match your requirements. Fits easily on most trolleys and in restricted spaces.



**CLK-4**  
Halogen Light Source

This 150-watt halogen lamp provides bright, color-balanced illumination. Provided with an air pump for insufflation and irrigation, this light source is ideally suited for use in doctors offices or exam rooms where space is limited or when an easily transportable system is required.



**KV-5**  
Endoscopic Suction Pump

The KV-5 is a multipurpose suction pump featuring variable suction control, powerful suction capability, and a large-capacity suction bottle. Ideal for use in both endoscopy suites and operating rooms, the KV-5 also boasts whisper quiet operation.



**OEV-143/203**  
Color Video Monitor

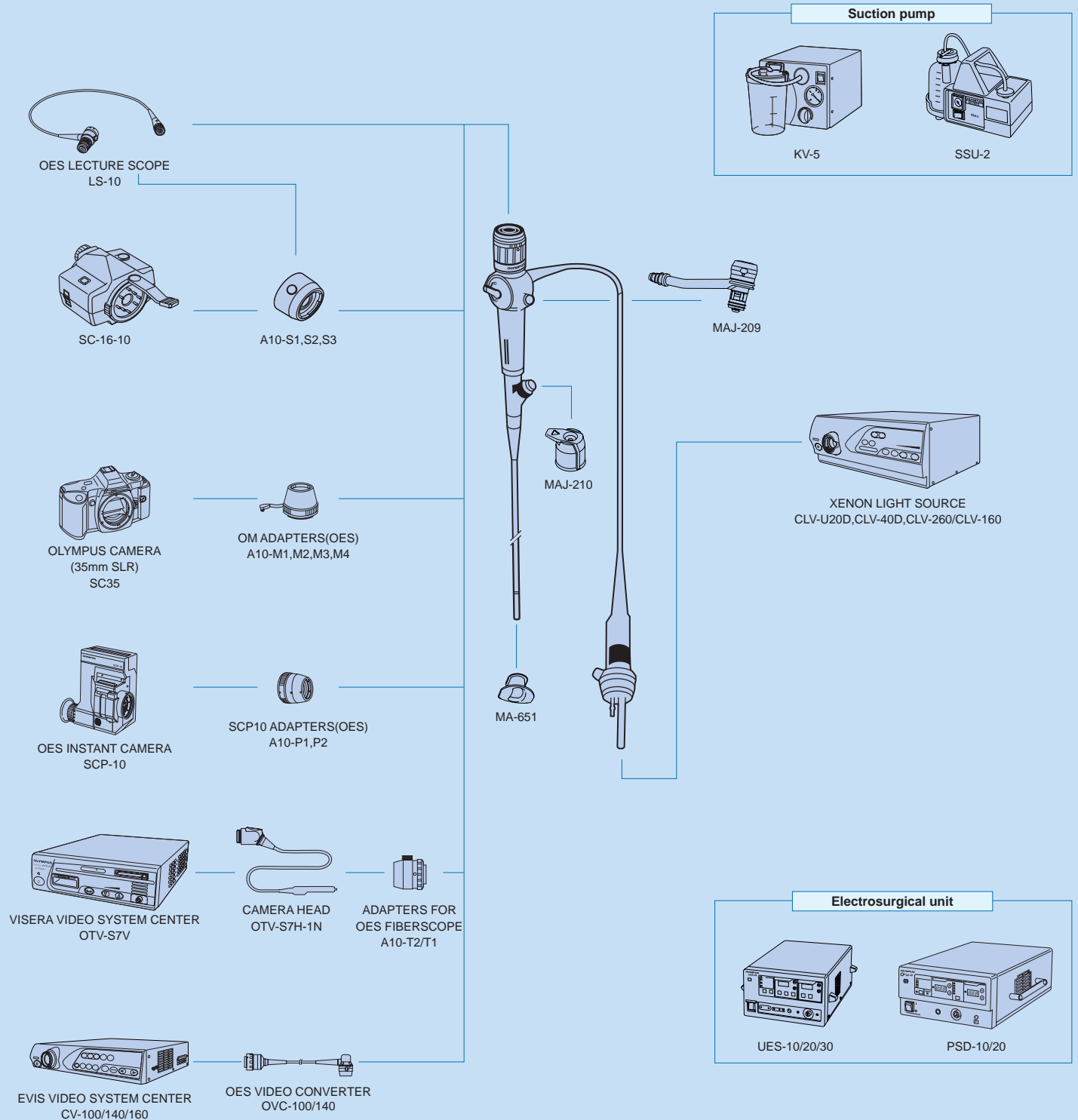
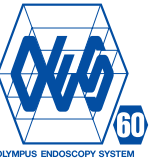
Incorporating a state-of-the-art HR Trinitron picture tube, these monitors provide superb image reproduction with crisp details, sharp contrast, and true-to-life colors. Built to meet the rigorous demands of medical use, these durable monitors feature a remote control function for integrated operation with a VCR and other ancillary devices, as well as on-screen menu and three scan modes.



**TC-C2**  
Bronchoscopic Trolley

Especially designed for bronchoscopy, the TC-C2 is everything needed to set up and operate a fully equipped bronchoscopy system. The compact, lightweight design makes it easy to move around within a bronchoscopy suite as well as from room to room.

# OES-60 System Chart





Specifications, design and accessories are subject to change without any notice or obligation on the part of the manufacturer.

**OLYMPUS®**

**OLYMPUS CORPORATION**  
Shinjuku Monclith, 3-1 Nishi-Shinjuku 2-chome, Shinjuku-ku, Tokyo 163-0914, Japan  
**OLYMPUS EUROPA GMBH**  
Postfach 10 49 08, 20034 Hamburg / Wendenstrasse 14-18, 20097 Hamburg, Germany  
**OLYMPUS AMERICA INC.**  
2 Corporate Center Drive, Melville, N.Y., 11747-3157, U.S.A.  
**OLYMPUS LATIN AMERICA, INC.**  
6100 Blue Lagoon Drive, Suite 390 Miami, Florida 33126-2087, U.S.A  
**KEYMED LTD.**  
Keymed House, Stock Road, Southend-on-Sea, Essex SS2 5QH, England

**OLYMPUS SINGAPORE PTE LTD.**  
491B River Valley Road #12-01/04, Valley Point Office Tower, Singapore 248373  
**OLYMPUS HONG KONG AND CHINA LIMITED**  
Room 1520-1527, Ocean Centre, 5 Canton Road, Tsimshatsui, Kowloon, Hong Kong  
**OLYMPUS BEIJING REPRESENTATIVE OFFICE**  
Room 1401, East Tower, Gong Yuan No6 Royal Palace, No6 Gong YuanXitie, JianGuoMenNei, DongCheng District, Beijing, 100005, China  
**OLYMPUS MOSCOW LIMITED LIABILITY COMPANY**  
117071, Moscow, Malaya Kaluzhskaya 19. bld., 1, fl.2, Russia  
**OLYMPUS AUSTRALIA PTY LTD.**  
31 Gilby Road, Mount Waverley, VIC., 3149, Australia

[www.olympus.com](http://www.olympus.com)

Printed in Japan R403SB-0804