

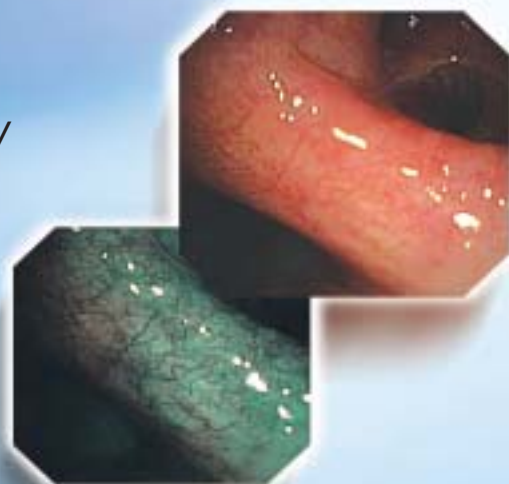
OLYMPUS[®]

Your Vision, Our Future

EVIS EXERA II BRONCHOVIDEOSCOPE
OLYMPUS BF TYPE Q180

EVIS
EXERA II

*BF-Q180 — A stunning new level of
imaging performance in bronchoscopy*



Dramatically improved image size and quality in a slim, easy-to-insert design

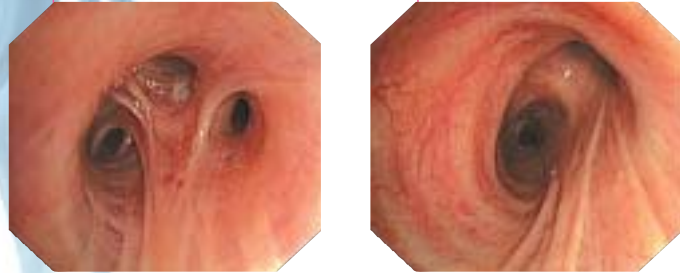
See the differences the BF-Q180 offers you



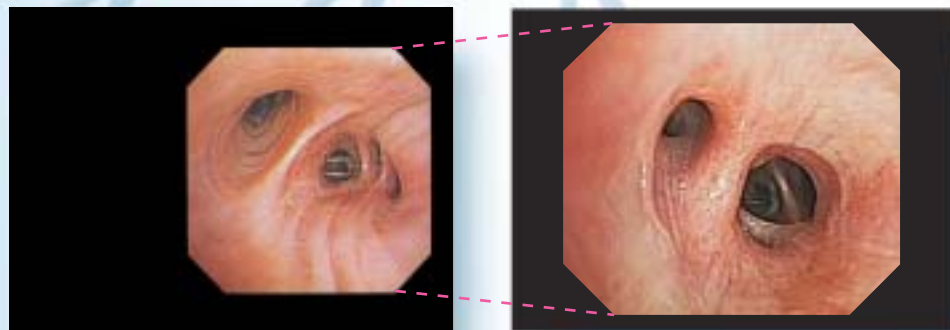
The new BF-Q180 has dramatically improved image quality and greatly enlarged image size in comparison to conventional bronchoscopes, yet its distal end measures just 5.5 mm and its insertion tube a thin 5.1 mm.

Superior image quality

The image quality of the BF-Q180 is something new in bronchoscopy. This extraordinary imaging is capable of rendering all details of the bronchial tree with superb sharpness and clarity.



Enlarged image size for easier observation



The BF-Q180 not only delivers dramatically improved image quality, it also provides a much larger image size than its predecessors. Not only are images clearer and sharper, they are larger and easier to observe so you can perform bronchoscopy with more ease and confidence.

Structure Enhancement

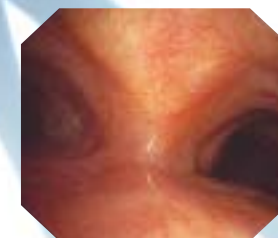


Normal Setting

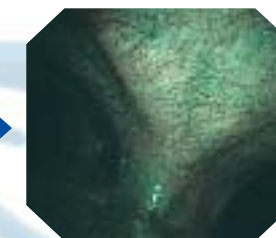


Structure Enhancement Level

NBI Images



Conventional image



NBI image



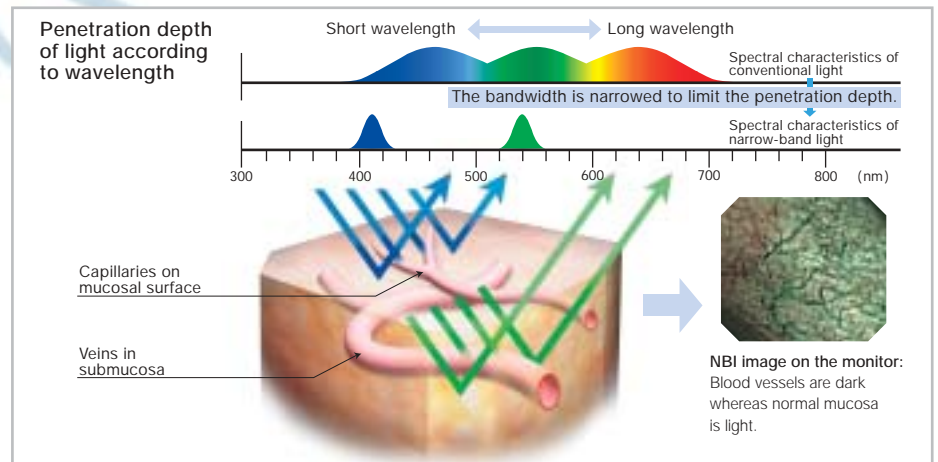
Conventional image



NBI image

What is NBI?

NBI is an optical image enhancement technology that enhances the visibility of vessels and other structures on the mucosal surface. Under NBI the normal white light spectrum is filtered to those narrow light bands that are absorbed by the hemoglobin in the blood. These green and blue bands penetrate only shortly below the surface of the mucosa and enhance the vascular pattern of this area. The NBI image displays blood containing vessels as dark structures, while normal mucosa appears bright. Through the clear visualization of the vessel structure it is possible to differentiate between an inflammation and a pathological vascularization.



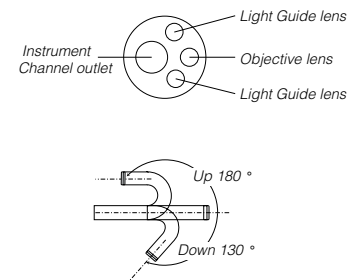
Main Features

- Superior image quality and a larger image size redefines examination and treatment in the bronchial tree.
- Narrow Band Imaging capability to highlight hidden tissue structures.
- Despite superior image quality, this scope features a slim design — measuring 5.1 mm in diameter at the insertion tube and 5.5 mm in diameter at the distal end.
- Standard 2.0 mm diameter channel to accommodate a wide variety of endo-therapy accessories.
- Compatible with electrosurgical and laser devices.
- Fully compatible with the Olympus CV-180 (CV-160/140) video processor and CLV-180 light source.
- Scope ID function stores individual scope information and displays it on the monitor to help facilitate management in pulmonary labs and operating rooms.



Specifications

Optical System	Field of view	120°
	Direction of view	0° (Forward viewing)
	Depth of field	3 ~ 100 mm
Insertion Tube	Distal end outer diameter	5.5 mm
	Insertion tube outer diameter	5.1 mm
	Working length	600 mm
Instrument Channel	Channel inner diameter	2.0 mm
	Minimum visible distance	3 mm from distal end
	Endo therapy accessory entrance/exit position in field of view	
	Bending Section	Angulation range
Laser Compatibility		Nd: YAG, 810nm diode
Electro-Cautery Instrument Compatibility		YES
Total Length		870 mm



Ancillary product



EVIS EXERA II CV-180 Video System Center

Designed to accommodate a wide range of scopes from a myriad of specialties, this leading-edge video processor offers high-resolution images and state-of-the-art image processing capabilities such as Narrow Band Imaging as well as a range of practical digital solutions.

EVIS EXERA II CLV-180 Xenon Light Source

With its powerful 300-watt xenon lamp, this light source unit delivers brilliant, shadow-free illumination and is equipped with filters that have been specially coated for use in Narrow Band Imaging. A new button on the front panel lets you turn the lamp on or off without having to power down the light source unit itself.

Specifications, design and accessories are subject to change without any notice or obligation on the part of the manufacturer.

OLYMPUS

OLYMPUS MEDICAL SYSTEMS CORP.
Shinjuku Monolith, 3-1 Nishi-Shinjuku 2-chome, Shinjuku-ku, Tokyo 163-0914, Japan
OLYMPUS MEDICAL SYSTEMS EUROPA GMBH
Postfach 10 49 08, 20034 Hamburg / Wendenstrasse 14-18, 20097 Hamburg, Germany
OLYMPUS AMERICA INC.
2 Corporate Center Drive, Melville, N.Y. 11747-3157, U.S.A.
OLYMPUS SURGICAL & INDUSTRIAL AMERICA INC.
One Corporate Drive, Orangeburg, New York 10962, U.S.A.
OLYMPUS LATIN AMERICA, INC.
6100 Blue Lagoon Drive, Suite 390 Miami, Florida 33126-2087, U.S.A.
KEYMED LTD.
Keymed House, Stock Road, Southend-on-Sea, Essex SS2 5QH, England

OLYMPUS SINGAPORE PTE LTD.
491B River Valley Road #12-01/04, Valley Point Office Tower, Singapore 248373
OLYMPUS HONG KONG AND CHINA LIMITED
Room 1520-1527, Ocean Centre, 5 Canton Road, Tsimshatsui, Kowloon, Hong Kong
OLYMPUS (BEIJING) SALES & SERVICE CO., LTD.
Room 1202, NCI Tower, A12 Jianguomenwai Avenue Chaoyang District Beijing, 100022, China
OLYMPUS MOSCOW LIMITED LIABILITY COMPANY
117071, Moscow, Malaya Kaluzhskaya 19, bld. 1, fl.2, Russia
OLYMPUS AUSTRALIA PTY LTD
31 Gilby Road, Mount Waverley, VIC., 3149, Australia